



# Cleveland Bouncers

[www.clevelandbouncers.com](http://www.clevelandbouncers.com)

# 2023 Customers top choice

Customers selected these bouncers as our top products in 2023 take a look at what the community says are our best units for your next event.

## • Castle combo - \$310 •

### • Description

The Castle Combo represent royalty and having it all which is exactly what the kids will be able to do in this inflatable 5 in 1 Castle Combo Jumper. They will have it all – jump, climb, slide, shoot hoops as well as runaround thru the popups while playing hide and go seek. So much excitement and giggles, screaming and shouting, laughter and joy will surround the area this combo is set up. L 22' x W19' x 15.3', 350LB



DIMENSIONS: L 22' x W 19' x 15.3', 350LB



## • All-in One Combo -\$285 •

The All-In One Combo is the ultimate inflatable Bounce House! The large interior jumping area offers a basketball hoop for endless slam-dunk fun. This versatile unit features a climb feature and a convenient exit slide, providing hours of active entertainment for kids of all ages! Parents and spectators can enjoy a clear view of the excitement, thanks to the 360-degree mesh sides of this moonwalk.

Dimensions: L17'.7 x W 14'.8 x H 16'.2 247LB



DIMENSIONS: **L17'.7 x W 14'.8 x H 16'.2 247LB**

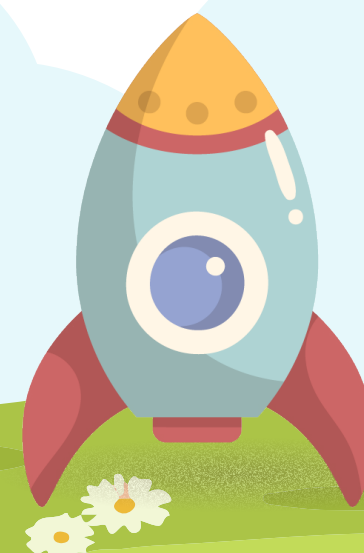


## • Extra Large Fun House -\$295 •

Extra Large Fun House is a larger version of our popular Fun House L16.3' x W20' x H12' 280LB



DIMENSIONS: L16.3' x W20' x H12' 280LB





## • Monsters Obstacle Course & Slide - \$610 •

### • Description

This oversized inflatable play structure has a bright and colorful theme of yellow, red and blue, perfect for high-traffic days. The Monster Obstacle Course is set up with over 70 feet of challenging obstacle entertainment in one unit. This inflatable play structure takes participants on a long journey through tunnels, around vertical pop-ups, with plenty of climbing and descending along the way! The course ends with a hefty climb up a wall with a plunging ridedown the dual slide. L70' x W 12.6' x H18' 789LB



**DIMENSIONS: L 22' x W 19' x 15.3', 350LB**



# Best Bang For Your Buck Packages

Here we have selected the best packages for your next events we have broken down the packages for you to give you the best value at your next event.

## • Basic Package \$330 •

Our Basic Party Package includes a Standard Bounce House a table and either a Popcorn, Sno Cone Machine and Cotton Candy with 50 servings

### • Requirements

#### **Camelot Castle House (1), OR Fun House (1)**

1. Popcorn Rental & Supplies for 50 People (1),
2. Sno Cone Rental & Supplies for 50 People (1) or  
Cotton Candy Rental & Supplies for 50 People (1)
3. 6 Foot Table Rental (1)



## • Deluxe Package \$905 •

Our Basic Party Package includes a Standard Bounce House a table and either a Popcorn, Sno Cone Machine and Cotton Candy with 50 servings

### • Requirements

**Monster Obstacle Course (1), and Extra Large Fun House (1), and Giant Slide (1)**

1. 6 Foot Table Rental (1)

2. Sno Cone Rental & Supplies for 100 (1), Or  
Popcorn Rental & Supplies for 100 (1)



# 2024 New Products

The community has spoken and we have delivered, take a look at our brand-new waterslide bouncer and Gellyball package.

- GellyBall 12 players package \$500
- 6 player package \$350

- **What is GallyBall?**

GellyBall is an ultra low impact sport – suitable for kids ages five and up. It uses GellyBall blasters an easy-to-use gun that doesn't use much pressure to shoot GellyBalls. Unlike paintballs there is no mess. GellyBall Blaster holds 750 shots without reloading!!!





## • Castle Combo water slide & pool \$475 •

The Castle Combo Water Slide & Pool is packed with fun features! With a water slide, splash pool and basketball hoops. This bounce house has no shortage of ways to keep kids entertained! This combo is an summer unit that guarantees you a great time.



**L 26' x W 20' x H 13'2" 390 LB**

